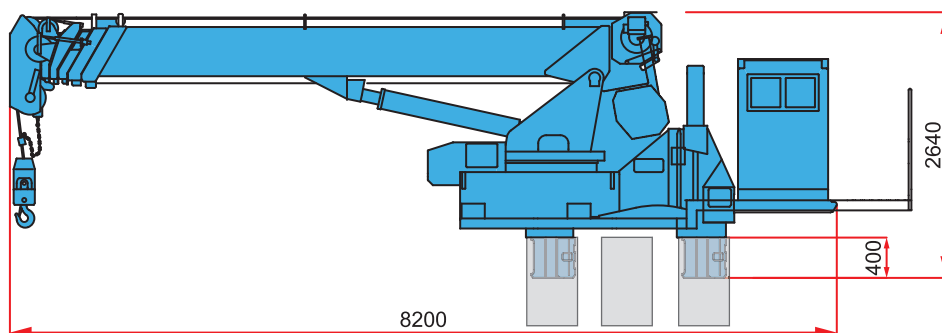
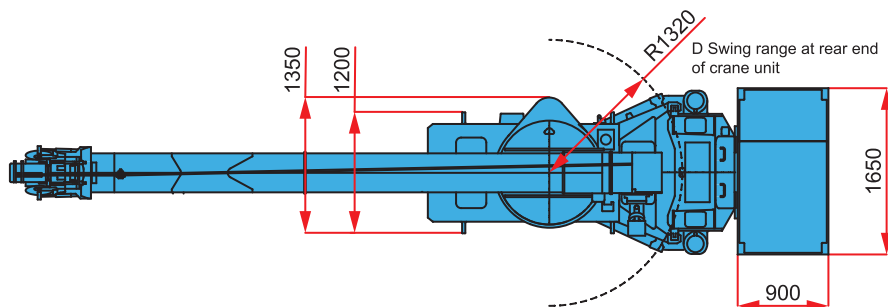
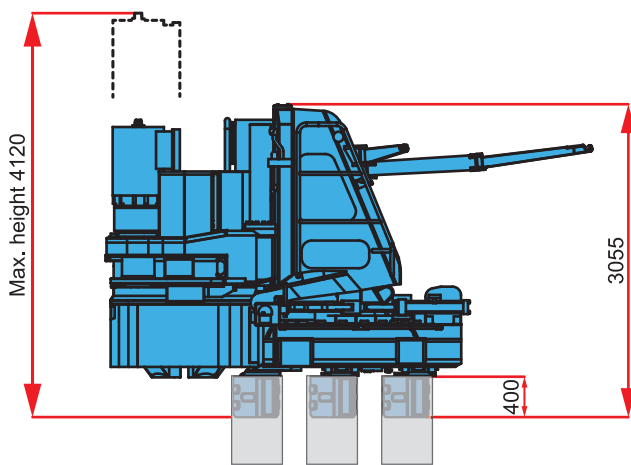
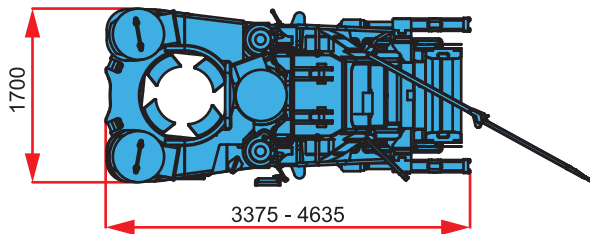


# GYRO PILER™ GRV0611e

GYRO PILER "GRV0611e" is an electric rotary cutting press-in machine that makes CO<sub>2</sub> zero emission installation possible. By supplying electric power directly from a power transmission line, power generator is not required. It means you can achieve completely zero emission piling work at site.



## GYRO PILER GRV0611e

Applicable Pile	Tubular Pile D500,D600 mm
Max. Press-in Force	1100 kN
Max. Extraction Force	1200 kN
Max. Chuck Rev. Torque	320 kN·m
Max. Chuck Rev. Speed	23.0 min <sup>-1</sup>
Chuck Up/Down Stroke	1200 mm
Press-in Speed	0.5 - 6.4 m/min
Extraction Speed	0.5 - 4.8 m/min
Mass	20500 kg (D500 mm)

## Generator (Recommended model: Denyo/DCA-610-SPM)

Voltage	Three-phase AC 440 V (50/60 Hz)
Capacity	610 kVA

## CLAMP CRANE™ CB2-11

Crane capacity	2.95 ton × 8.0 m (1 part of line)
Max. working radius	24.0 m
Max. lifting height	26.0 m
Control System	Radio Control
Mass	10100 kg
Applicable Pile	Tubular Pile D500,D600 mm Tubular Sheet Pile D500,D600 mm (LT,PT,PP)
Power Unit	MU37B

**GIKEN** Construction Solutions Company

[www.giken.com](http://www.giken.com)

## GIKEN LTD.

International Business Department

16F Ariake Central Tower, 3-7-18 Ariake, Koto-ku, Tokyo 135-0063, Japan

Tel. : +81-(0)3-3528-1633 Fax : +81-(0)3-3527-6055 E-mail : [international@giken.com](mailto:international@giken.com)

